

A graphical overview:

A new social contract for the 21st century

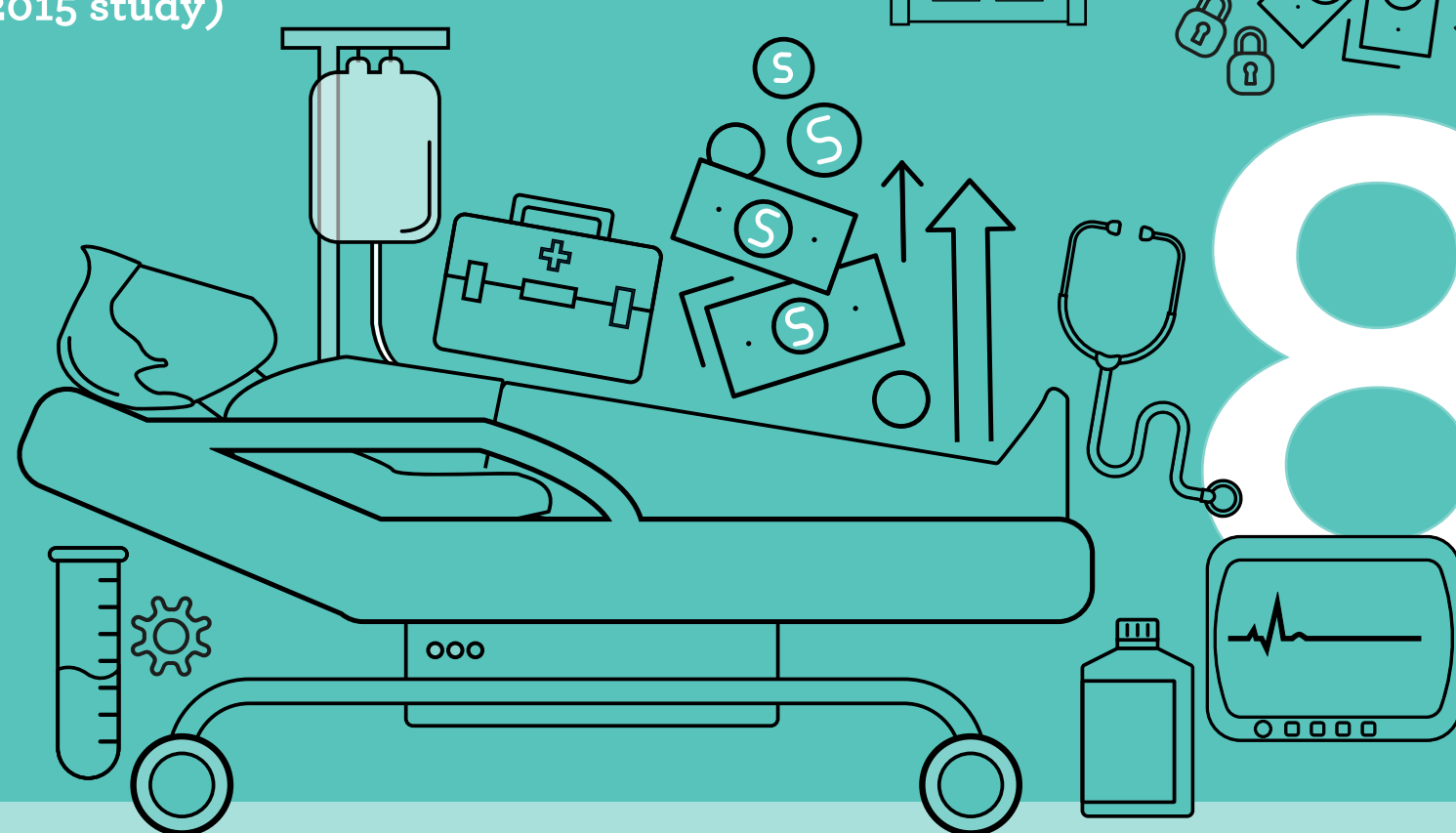
A CHANGING WORLD NEEDS POLICIES THAT SUPPORT DIVERSE TYPES OF WORK

How do we ensure all work is secure and sustainable for workers and business?



TOO OFTEN SOCIAL SAFETY NETS ARE NOT UNIVERSAL

In the EU (2015 study)



8%

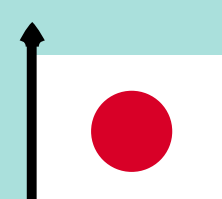
would not receive sickness benefit (if they became too ill to work)

13%

at risk of not receiving unemployment insurance/benefit (if they lose their jobs)



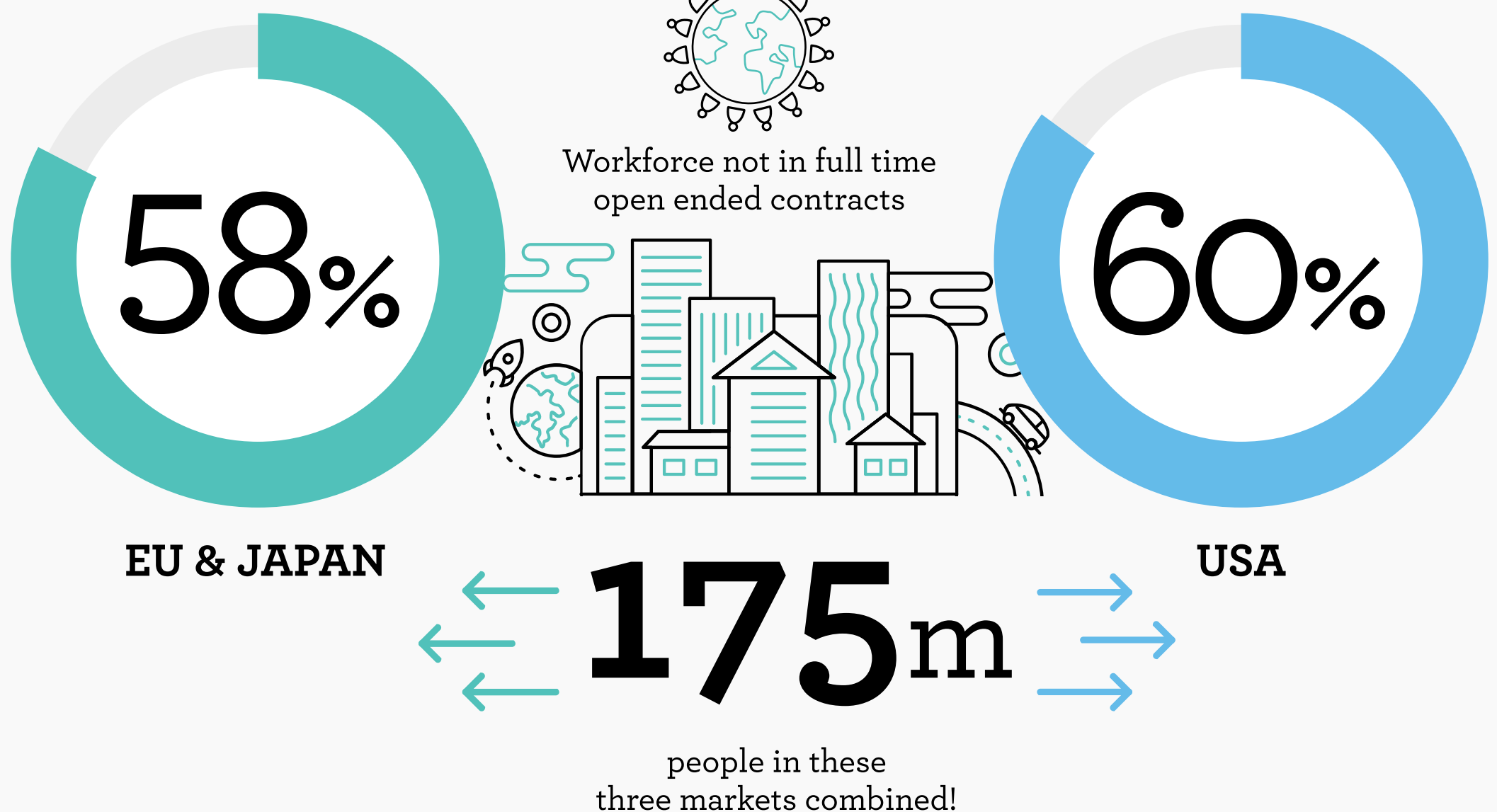
In South Korea, despite improvements over the last decade, just 52% of workers were covered in 2016 for unemployment insurance.



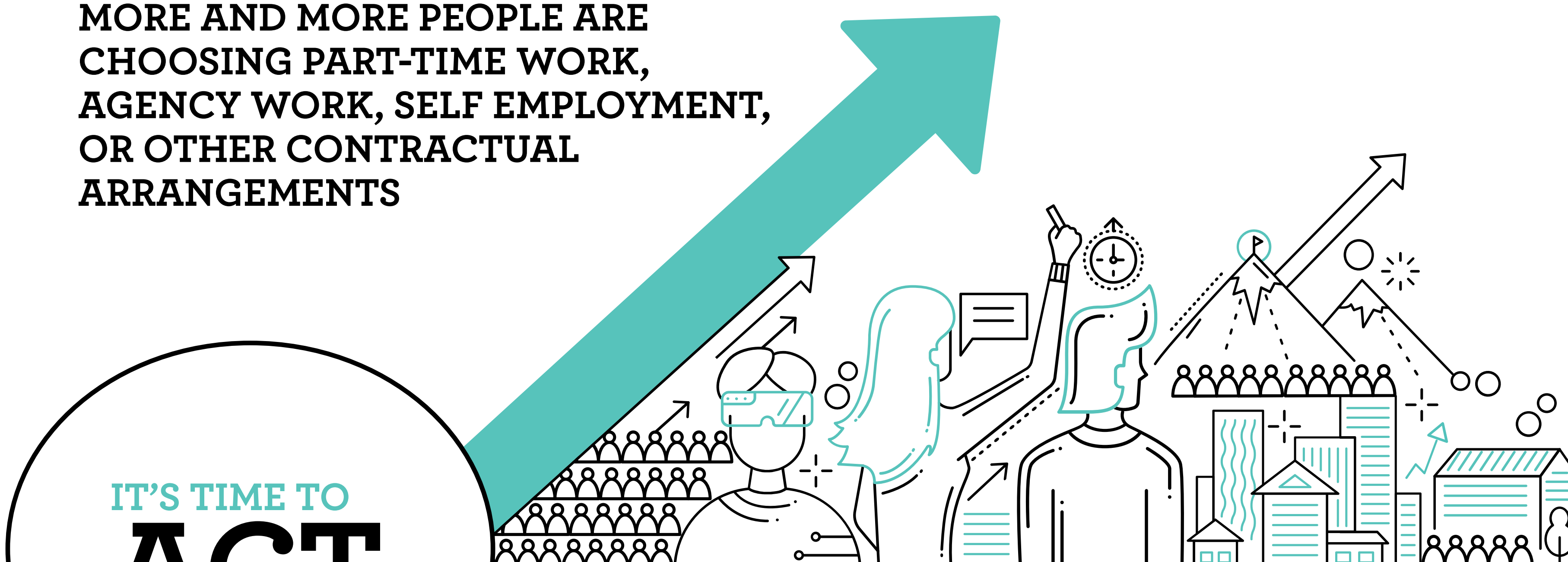
In Japan, just 77% of potential beneficiaries of contributory social insurance schemes – including pensions and unemployment and disability protection – actually received any payments.

WORKERS NOT IN FULL TIME OPEN ENDED CONTRACTS ARE MOST LIKELY TO MISS OUT

Many programmes are based on payroll deductions that do not take into account diverse forms of work.



MORE AND MORE PEOPLE ARE CHOOSING PART-TIME WORK, AGENCY WORK, SELF EMPLOYMENT, OR OTHER CONTRACTUAL ARRANGEMENTS



IT'S TIME TO **ACT**

JOIN THE CONVERSATION...

#SocialContract
gig-economy.adecgroup.com